

1047 17TH AVE.

FOR LEASE

Santa Cruz, CA

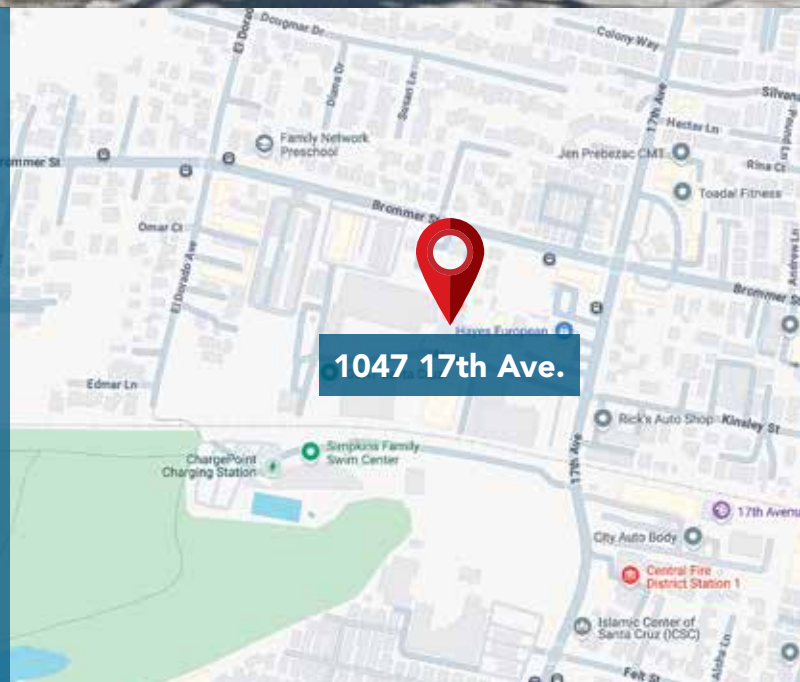
\$1.15 Per Sq. Ft. Per Month, NNN (\$0.32 +/-)



Property Highlights

- 10,500 sq. ft. updated Mid County Warehouse/ Showroom
- Flexible Layout
- Roll Up Door
- Multiple Restrooms
- Demonstration Kitchen

Information presented in this proforma was provided by the Seller. Shoemaker Commercial makes no representation as to the accuracy of the information. Buyer should use diligence investigating the financial feasibility in making a purchase or lease by relying on his or her own professional advisors.



SHOEMAKER
COMMERCIAL
REAL ESTATE

Chris Shoemaker, CCIM

Broker/Owner

Cell: 831.247.2647

chris@shoemakercommercial.com

shoemakercommercial.com

CalBRE# 01760812



This brochure has been prepared to provide summary information to prospective purchasers and to establish a preliminary level of interest in the property presented. It does not, however, purport to present all material information regarding the subject property, and it is not a substitute for thorough due diligence investigation. In particular, neither Shoemaker Commercial Real Estate, Inc. nor Chris Shoemaker have made any investigation, and make no warranty or representation with respect to the financial condition or business prospects of any tenant, or any tenant's plans or intentions to continue or renew its occupancy of the subject property. The information contained in this brochure has been obtained from sources we believe to be reliable; however, neither Shoemaker Commercial Real Estate, Inc. nor Chris Shoemaker have conducted any investigation regarding these matters and make no warranty or representation whatsoever regarding the accuracy or completeness of the information provided.

IMPROVEMENTS, SIZE AND BOUNDARIES

Any oral or written representations by Seller or Broker regarding age of improvements, size and square footage of parcel, building, or location of property lines may not be accurate. Apparent boundary line indicators such as fences, hedges, walls or other barriers may not represent the true boundary lines, only a surveyor can determine the actual boundary lines. If any of these issues are important to the Buyer's decision to purchase, then the Buyer should consider investigating the property independently.



Information presented in this proforma was provided by the Seller. Shoemaker Commercial makes no representation as to the accuracy of the information. Buyer should use diligence investigating the financial feasibility in making a purchase or lease by relying on his or her own professional advisors.

shoemakercommercial.com

PROPERTY DESCRIPTION

1047 17th Ave, Santa Cruz, Ca

APN 026-311-49

ADDRESS 1047 17th Ave
Santa Cruz, CA 95062

IMPROVEMENT SIZE 10,500 sq. ft. +/-

LAND SIZE 17,468 sq. ft.

ZONING C-4

PARKING 10 Spaces

CLEAR HEIGHT 17' Ceiling, 14" at Bottom of Trusses

RESTROOMS Multiple

EXTERIOR ROLL UP 14' Wide and 16' Tall

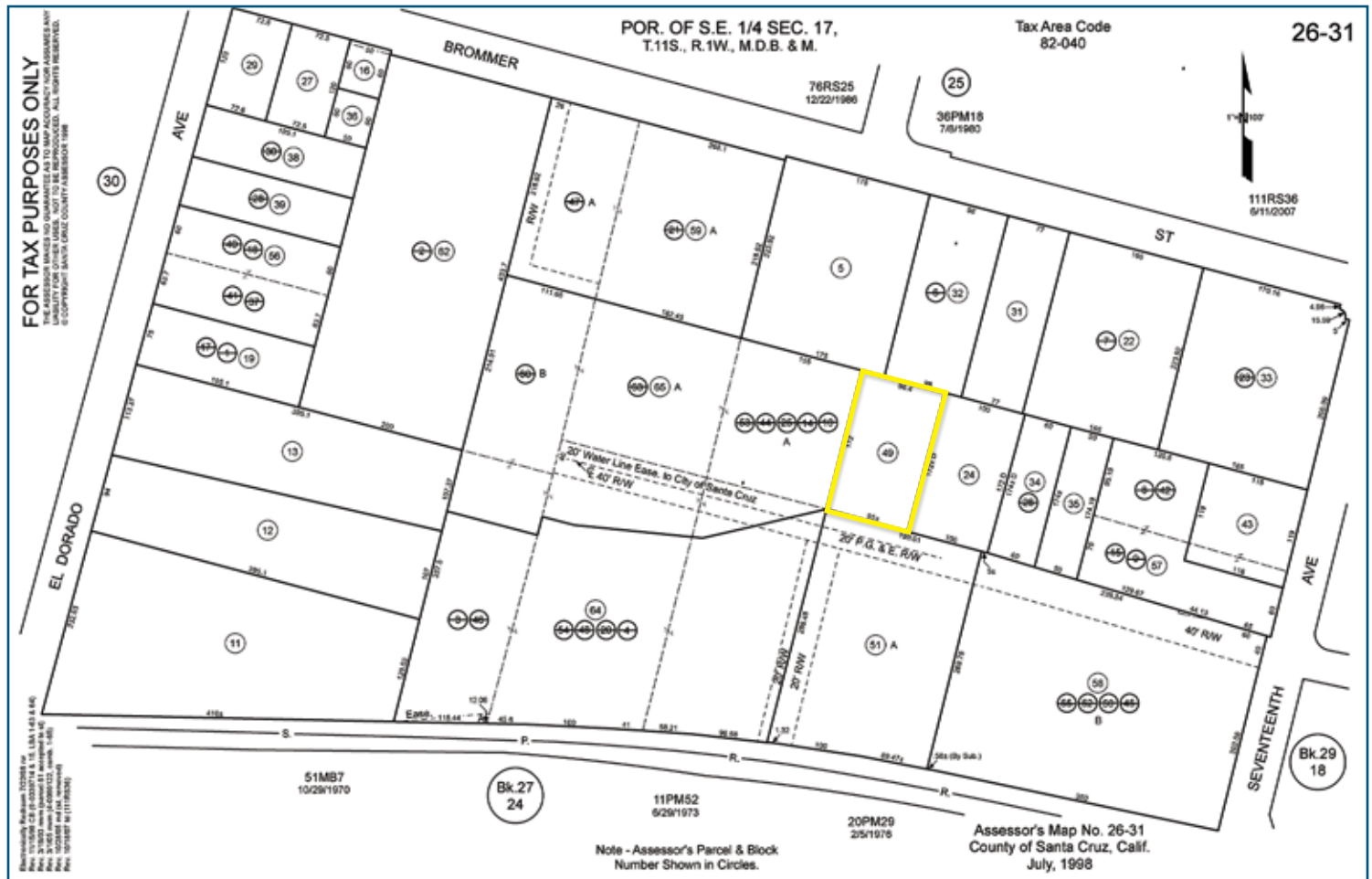


Information presented in this proforma was provided by the Seller. Shoemaker Commercial makes no representation as to the accuracy of the information. Buyer should use diligence investigating the financial feasibility in making a purchase or lease by relying on his or her own professional advisors.

shoemakercommercial.com

TAX MAP

1047 17th Ave, Santa Cruz, Ca



AERIAL PHOTO

1047 17th Ave, Santa Cruz, Ca



Information presented in this proforma was provided by the Seller. Shoemaker Commercial makes no representation as to the accuracy of the information. Buyer should use diligence investigating the financial feasibility in making a purchase or lease by relying on his or her own professional advisors.

shoemakercommercial.com

PHOTOS

1047 17th Ave, Santa Cruz, Ca



Information presented in this proforma was provided by the Seller. Shoemaker Commercial makes no representation as to the accuracy of the information. Buyer should use diligence investigating the financial feasibility in making a purchase or lease by relying on his or her own professional advisors.

shoemakercommercial.com