

**1600 BROMMER ST.**

**FOR SALE**

**Santa Cruz, CA**

**\$2,988,000**



## Property Highlights

- Mixed Use Development Parcel with Preliminary Design for 58 Residential Units
- Approximately 5,000 sq. ft. of Commercial/Retail Space
- Ample Parking
- On a Santa Cruz Transit Corridor

Information presented in this proforma was provided by the Seller. Shoemaker Commercial makes no representation as to the accuracy of the information. Buyer should use diligence investigating the financial feasibility in making a purchase or lease by relying on his or her own professional advisors.



**Chris Shoemaker, CCIM**

Broker/Owner

Cell: 831.247.2647

chris@shoemakercommercial.com

shoemakercommercial.com

CalBRE# 01760812



**Frank Oliver**

Broker/Owner

Oliver Group

Cell: 408.472.4700

frank@olivergroupsv.com

DRE# 00491292



This brochure has been prepared to provide summary information to prospective purchasers and to establish a preliminary level of interest in the property presented. It does not, however, purport to present all material information regarding the subject property, and it is not a substitute for thorough due diligence investigation. In particular, neither Shoemaker Commercial Real Estate, Inc. nor Chris Shoemaker have made any investigation, and make no warranty or representation with respect to the financial condition or business prospects of any tenant, or any tenant's plans or intentions to continue or renew its occupancy of the subject property. The information contained in this brochure has been obtained from sources we believe to be reliable; however, neither Shoemaker Commercial Real Estate, Inc. nor Chris Shoemaker have conducted any investigation regarding these matters and make no warranty or representation whatsoever regarding the accuracy or completeness of the information provided.

#### IMPROVEMENTS, SIZE AND BOUNDARIES

Any oral or written representations by Seller or Broker regarding age of improvements, size and square footage of parcel, building, or location of property lines may not be accurate. Apparent boundary line indicators such as fences, hedges, walls or other barriers may not represent the true boundary lines, only a surveyor can determine the actual boundary lines. If any of these issues are important to the Buyer's decision to purchase, then the Buyer should consider investigating the property independently.



Information presented in this proforma was provided by the Seller. Shoemaker Commercial makes no representation as to the accuracy of the information. Buyer should use diligence investigating the financial feasibility in making a purchase or lease by relying on his or her own professional advisors.

[shoemakercommercial.com](http://shoemakercommercial.com)

# PROPERTY DESCRIPTION

1600 Brommer St, Santa Cruz, Ca

**APN** 026-311-22

**ADDRESS** 1600 Brommer St  
Santa Cruz, CA 95062

**PARCEL SIZE** 37,418 sq. ft. / .85 Acre

**CURRENT DESIGN** 58 Residential Units,  
Approximately 5,000 sq. ft.  
Commercial / Retail

**ZONING** C-1



Information presented in this proforma was provided by the Seller. Shoemaker Commercial makes no representation as to the accuracy of the information. Buyer should use diligence investigating the financial feasibility in making a purchase or lease by relying on his or her own professional advisors.

[shoemakercommercial.com](http://shoemakercommercial.com)

**1600 Brommer St, Santa Cruz, Ca**

[shoemakercommercial.com](http://shoemakercommercial.com)



# AERIAL PHOTO

1600 Brommer St, Santa Cruz, Ca



Information presented in this proforma was provided by the Seller. Shoemaker Commercial makes no representation as to the accuracy of the information. Buyer should use diligence investigating the financial feasibility in making a purchase or lease by relying on his or her own professional advisors.

[shoemakercommercial.com](http://shoemakercommercial.com)

# PHOTOS

1600 Brommer St, Santa Cruz, Ca



Information presented in this proforma was provided by the Seller. Shoemaker Commercial makes no representation as to the accuracy of the information. Buyer should use diligence investigating the financial feasibility in making a purchase or lease by relying on his or her own professional advisors.

[shoemakercommercial.com](http://shoemakercommercial.com)



**1600 Brommer St, Santa Cruz, Ca**

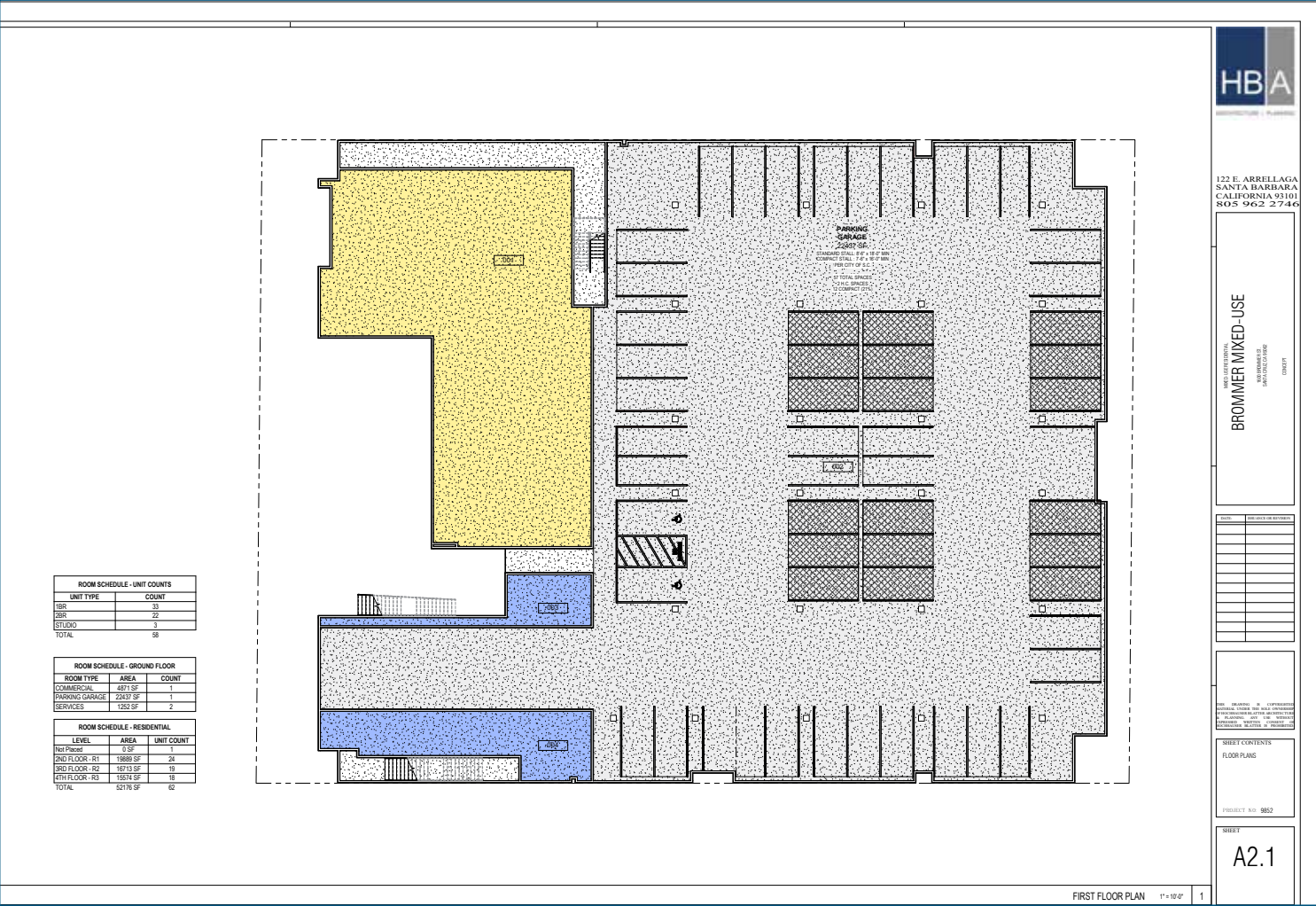


### STREET VIEW



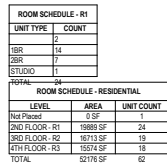
# PLANS

## 1600 Brommer St, Santa Cruz, Ca





**1600 Brommer St, Santa Cruz, Ca**

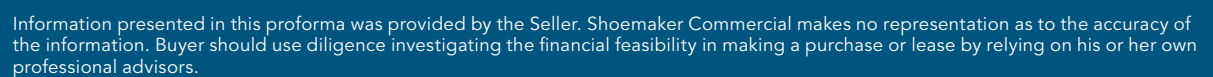
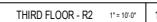


A2.2

SECOND FLOOR PLAN - R1 1" = 10'-0"

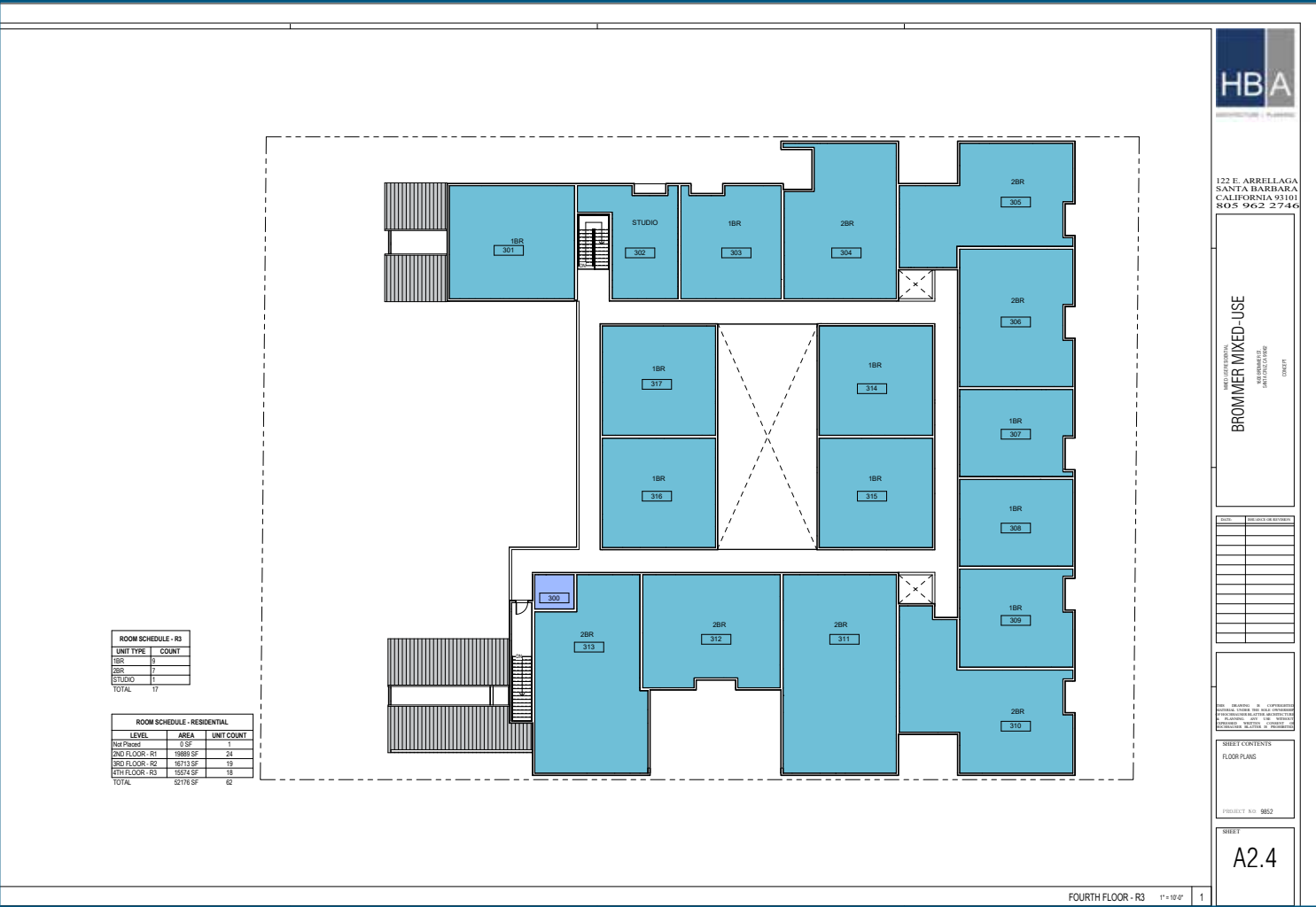


**1600 Brommer St, Santa Cruz, Ca**



# PLANS

## 1600 Brommer St, Santa Cruz, Ca



122 E. ARRELLAGA  
SANTA BARBARA  
CALIFORNIA 93101  
805 962 2746

BROMMER MIXED-USE

NO.	DESCRIPTION
1	FLOOR PLANS
2	SECTION
3	DETAIL
4	SECTION
5	DETAIL
6	SECTION
7	DETAIL
8	SECTION
9	DETAIL
10	SECTION
11	DETAIL
12	SECTION
13	DETAIL
14	SECTION
15	DETAIL
16	SECTION
17	DETAIL
18	SECTION
19	DETAIL
20	SECTION
21	DETAIL
22	SECTION
23	DETAIL
24	SECTION
25	DETAIL
26	SECTION
27	DETAIL
28	SECTION
29	DETAIL
30	SECTION
31	DETAIL
32	SECTION
33	DETAIL
34	SECTION
35	DETAIL
36	SECTION
37	DETAIL
38	SECTION
39	DETAIL
40	SECTION
41	DETAIL
42	SECTION
43	DETAIL
44	SECTION
45	DETAIL
46	SECTION
47	DETAIL
48	SECTION
49	DETAIL
50	SECTION
51	DETAIL
52	SECTION
53	DETAIL
54	SECTION
55	DETAIL
56	SECTION
57	DETAIL
58	SECTION
59	DETAIL
60	SECTION
61	DETAIL
62	SECTION
63	DETAIL
64	SECTION
65	DETAIL
66	SECTION
67	DETAIL
68	SECTION
69	DETAIL
70	SECTION
71	DETAIL
72	SECTION
73	DETAIL
74	SECTION
75	DETAIL
76	SECTION
77	DETAIL
78	SECTION
79	DETAIL
80	SECTION
81	DETAIL
82	SECTION
83	DETAIL
84	SECTION
85	DETAIL
86	SECTION
87	DETAIL
88	SECTION
89	DETAIL
90	SECTION
91	DETAIL
92	SECTION
93	DETAIL
94	SECTION
95	DETAIL
96	SECTION
97	DETAIL
98	SECTION
99	DETAIL
100	SECTION

SHEET CONTENTS  
FLOOR PLANS

PROJECT NO. 0052

SHEET  
A2.4





# PLANS

## 1600 Brommer St, Santa Cruz, Ca

