

4430-4432 SOQUEL DRIVE

FOR SALE

Soquel, CA

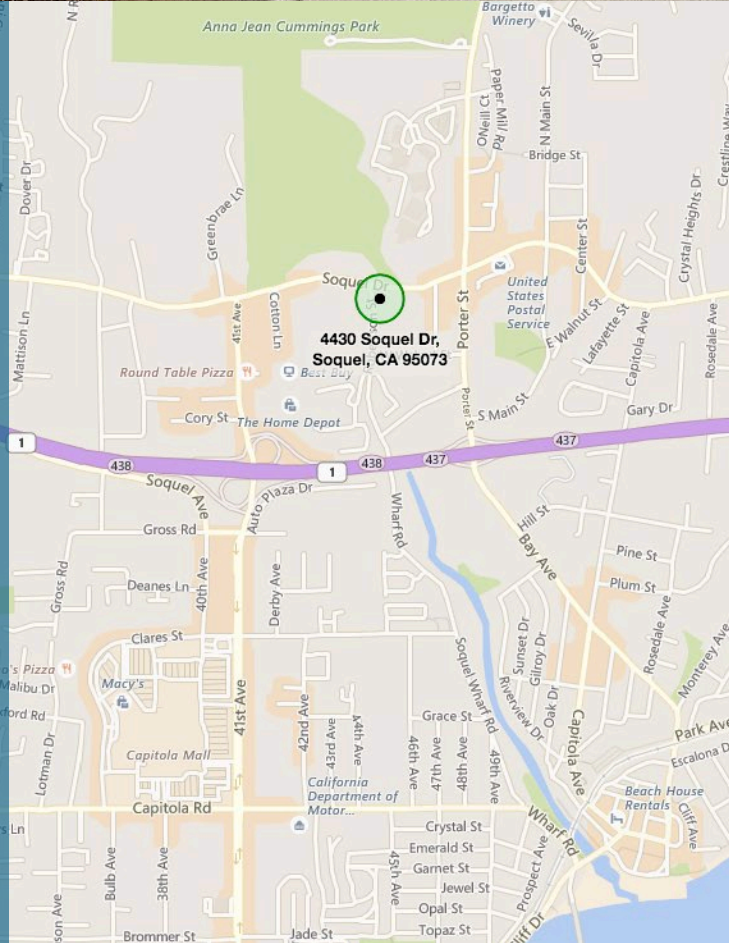
\$799,000



Property Highlights

- Duplex: 2-bed, 1-bath units
- Both units are vacant and ready for lease-up or upgrades
- Located on Soquel Drive between Robertson Street and Soquel Village Laundry hook ups and yard space create a comfortable environment
- Mid County location provides easy access to Highway 1, 41st Ave, Soquel Village, and Cabrillo College

For more information, contact exclusive Broker



SHOEMAKER
COMMERCIAL
REAL ESTATE

Information presented in this proforma was provided by the Seller. Shoemaker Commercial makes no representation as to the accuracy of the information. Buyer should use diligence investigating the financial feasibility in making a purchase or lease by relying on his or her own professional advisors.

Chris Shoemaker

Broker/Owner

831.247.2647

chris@hirschandassociates.com

CalBRE# 01760812

PROPERTY DESCRIPTION

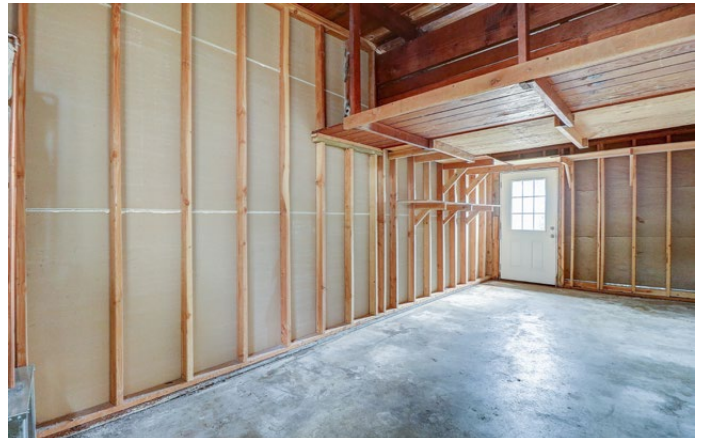
4430-4432 Soquel Drive, Soquel

APN	030-141-34
ADDRESS	4430-4432 Soquel Dr., Soquel, CA 95073
LOCATION	Located on Soquel Drive between Robertson Street and Soquel Village
CURRENT USE	Duplex
ZONING	PA
PARCEL SIZE	7,144 sq ft
IMPROVEMENT SIZE	1,536 + 480 sq ft
IMPROVEMENT DESCRIPTION	Two 2-bedroom/1 bath units, each with adjacent storage
PARKING	4+
UTILITIES/METERS	Public utilities, master water meter, separate gas & electric meters
TENANTS/LEASES	Vacant



PHOTOS

4430-4432 Soquel Drive, Soquel



Information presented in this proforma was provided by the Seller. Shoemaker Commercial makes no representation as to the accuracy of the information. Buyer should use diligence investigating the financial feasibility in making a purchase or lease by relying on his or her own professional advisors.