

805 FRONT STREET

FOR LEASE

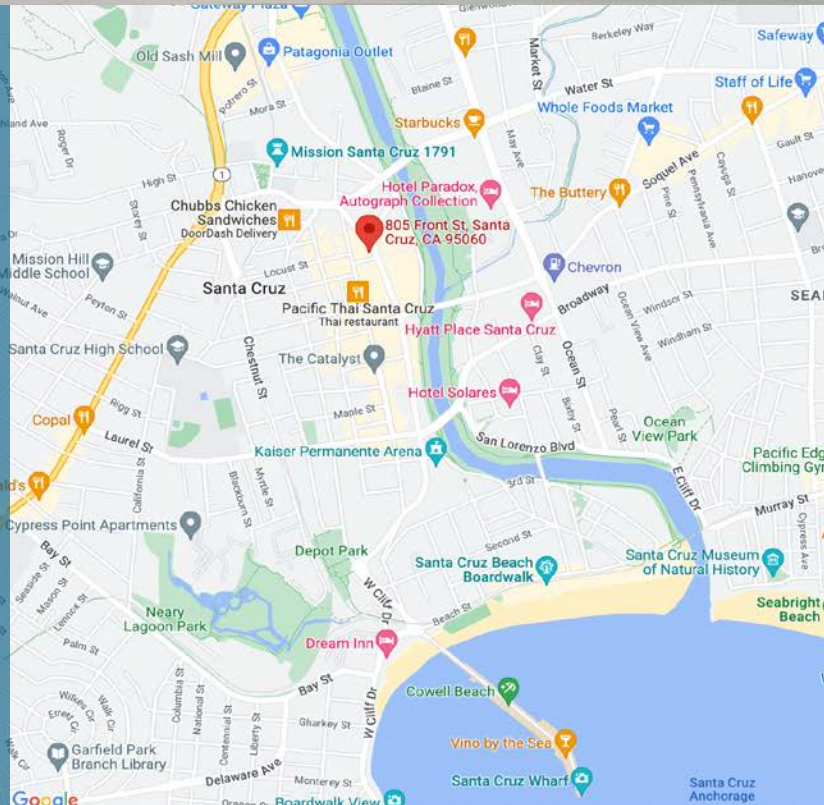
SANTA CRUZ, CA

\$7,500 per month gross



Property Highlights

- 4,413 sq. ft. of second floor office space plus 1,205 sq. ft. storage
- Elevator served
- On corner of Front and Cooper streets in downtown Santa Cruz
- Mix of private and open space with lots of natural light and glass
- Kitchen and two bathrooms
- Near Public Parking



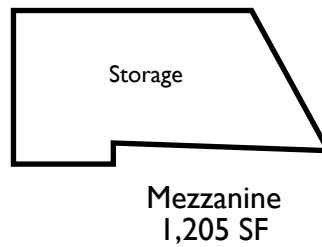
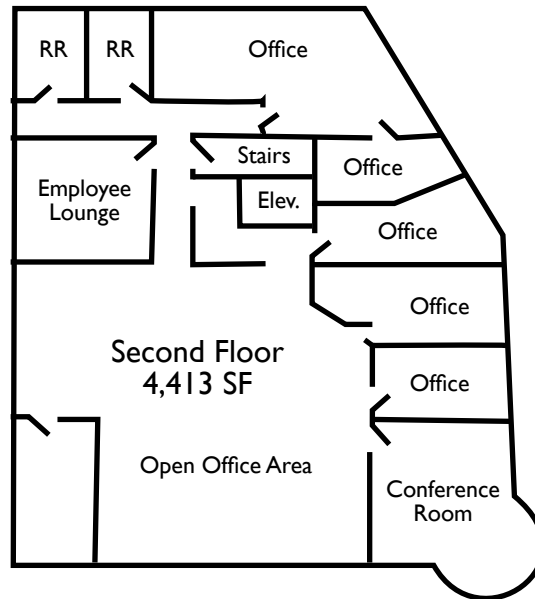
Information presented in this proforma was provided by the Seller. Shoemaker Commercial makes no representation as to the accuracy of the information. Buyer should use diligence investigating the financial feasibility in making a purchase or lease by relying on his or her own professional advisors.



SHOEMAKER
COMMERCIAL
REAL ESTATE

Chris Shoemaker, CCIM
Broker/Owner
831.247.2647
chris@shoemakercommercial.com
CalBRE# 01760812

FLOORPLANS

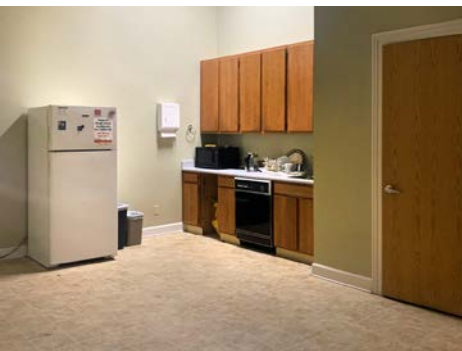


AREA MAP



Information presented in this proforma was provided by the Seller. Shoemaker Commercial makes no representation as to the accuracy of the information. Buyer should use diligence investigating the financial feasibility in making a purchase or lease by relying on his or her own professional advisors.

PHOTOS



Information presented in this proforma was provided by the Seller. Shoemaker Commercial makes no representation as to the accuracy of the information. Buyer should use diligence investigating the financial feasibility in making a purchase or lease by relying on his or her own professional advisors.